



МАШСЕРВИС

+7 (495) 988-22-19

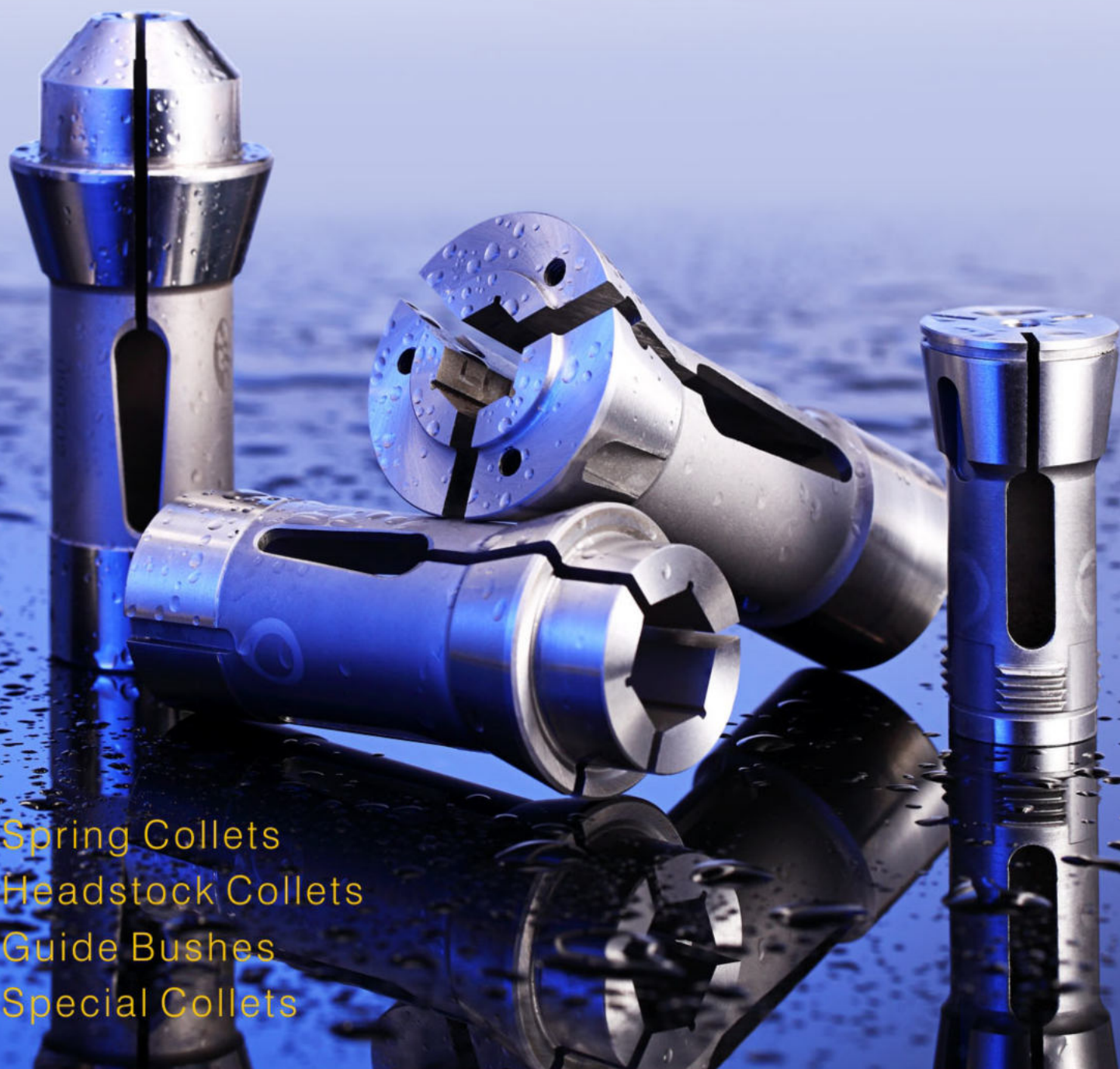


Москва
Санкт-Петербург
Екатеринбург

Enituice

ENTERPRISE CO., LTD.

Honesty / Professional / Quality



Spring Collets
Headstock Collets
Guide Bushes
Special Collets

www.m-ser.ru



ISO9001:2008



Enituice
ENTERPRISE CO., LTD.



Enituice is a professional and ISO 9001:2008 accredited manufacturer specializing in designing and producing all kinds of Steel Collets, Carbide Collets, and Guide Bushes. Our products are widely used as Work Holding Tools or CNC Auto Lathe Tools.

With over 30 years of engineering and manufacturing experience, we are committed to exceeding the expectations of our customers. Through dedicated teamwork, we ensure that we supply quality products and services to the complete satisfaction of our customers, by doing it right the first time and every time. We promise to strive for continual improvement. Our products have been exporting to countries such as United States, Canada, Turkey, Brazil, Vietnam, Thailand, Malaysia, Israel, Russia, Pakistan, Netherlands, Sweden, and Italy.

Our Product Advantages:

- Good durability and high precision
- Superior material
- Competitive prices
- Comprehensive product range
- Customized products are available
- On time delivery

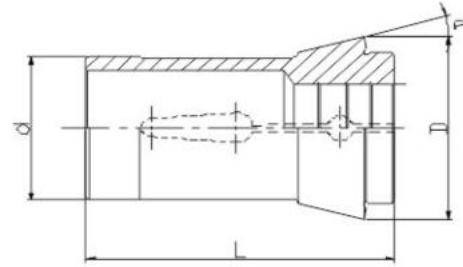
Honestly speaking, quality is not something to claim or to explain, it can only be experienced. We firmly believe that a trial order would build confidence between us and it will pave a way to mutually beneficial business.

If you are interested in further product information, please feel free to contact us. We are happy to negotiate with potential customers to meet specific requests whenever possible. We welcome your inquiries and hope to be of service in the future.



Enituice
ENTERPRISE CO., LTD.

PUSH-TYPE COLLETS

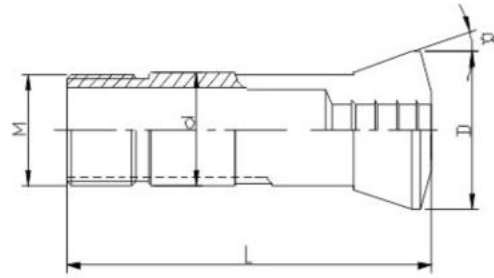


Art-No	Type	Item No	d	L	D	DIN No	Schau No	NEU NO
140E	TRAUB A-15	1215	ø 22.0	55	ø 30.0	6343-22	F22/71	
148E	TRAUB A-20	1220	ø 28.0	70	ø 38.0		F28/93	231.004
161E	TRAUB A-25	1225	ø 32.0	75	ø 45.0	6343-32	F32/221	231.005
162E	INDEX#25	1226	ø 35.0	70	ø 43.0		F35/67	
163E	INDEX#30	1230	ø 35.0	80	ø 48.0	6343-35	F35/94	
164E	#22 B&S LICO#32	1232	ø 38.1	108	ø 49.0		F38/72	285.002
171E	INDEX#36	1236	ø 42.0	94	ø 55.0	6343-42	F42/99	231.007
173E	INDEX#42	1242	ø 48.0	94	ø 60.0	6343-48	F48/81	231.009
177E	INDEX#52	1252	ø 58.0	94	ø 70.0			
185E	INDEX#60	1261	ø 66.0	110	ø 84.0	6343-60	F66/359	231.001
193E	INDEX#80	1280	ø 90.0	130	ø 107.0	6343-80		
POLYGYM	#38	1238	ø 42.0	92	ø 51.0			
LI CO	TNS-30/42	1240	ø 46.0	65	ø 55.0			
	#65	1265	ø 72.0	142	ø 90.25			
JINN FA	C-32	1332	ø 40.0	104	ø 54.5			
	C-44	1342	ø 54.0	87	ø 68.0			
	JCL-50	1350	ø 60.0	89	ø 72.0			
	JCL-60	1360	ø 75.0	100	ø 93.0			
	JCL-75	1375	ø 85.0	110	ø 98.0			
MIYANO	BNC20	1720	ø 27.0	73	ø 38.0			
	BNC34	1734	ø 44.4	108	ø 54.2			
	#25	1725	ø 40.0	95	ø 45.0			
RIKEN	SAD-25	1726	ø 30.0	66	ø 43.0			
	SAD-40	1742	ø 48.0	84	ø 66.0			
	SAD-50	1750	ø 56.0	94	ø 68.0			
	SAD-65	1765	ø 75.0	100	ø 93.0			



Enituice
ENTERPRISE CO., LTD.

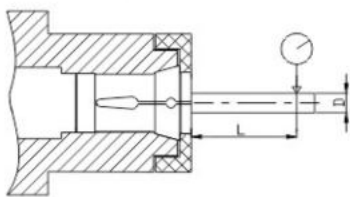
PULL-TYPE COLLETS



Machines	Type	Steel	Carbide	d	L	D	Thread M
		Item No	Item No				
EGURO	#6	1015	2015	ø 19.0	76	ø 26.0	18.5X1.2
	#8	1020	2020	ø 25.0	102	ø 33.0	24X1.5
	#10	1024	2024	ø 32.0	118	ø 42.0	32X1.5
YUNGHO	YB-25	1025	2025	ø 32.0	104	ø 39.0	31.5X20F"
	YB-32	1032	2032	ø 39.0	119	ø 49.0	38X18F"
	YB-42	1042	2042	ø 52.0	137	ø 64.0	50X16F"
FUJI	#0825	1112	2112	ø 16.0	72	ø 24.0	15X0.85
	#1820	1120	2120	ø 28.0	100	ø 36.0	25X1.5
	#1825	1125	2125	ø 35.0	124	ø 49.0	33X1.5
	#1832	1132	2132	ø 43.0	137	ø 57.5	40X1.75
DAIWA	#10	1410	2410	ø 15.0	60	ø 21.0	15X1.0
	#102	1412	2412	ø 17.0	69	ø 24.0	17X1.0
	#15	1415	2415	ø 22.0	85	ø 28.0	21X1.0
KITAMURA	XKNC-15FA	1515	2515	ø 19.05	76	ø 26.0	18.5X1.25
	XKNC-20FA	1520	2520	ø 26.0	92	ø 34.0	25X1.25
HARDINGE	5C	1705	2705	ø 31.75	88	ø 37.3	31.3X20F"
	16C	1716	2716	ø 48.0	114.5	ø 57.4	47.5X1.75
	20C	1720	2720	ø 60.4	163	ø 73.2	60X1.5
	R8	1708	2708	ø 24.1	105	ø 32.4	19X1.5
RIKEN	PULL-25	1825	2825	ø 36.0	88	ø 44.0	32X1.5
	PULL-40	1840	2840	ø 55.0	110	ø 66.0	50X1.5
	PULL-60	1860	2860	ø 83.0	132	ø 97.0	78X2.0
CITIZEN	BL20/25	1820	2820	ø 33.0	100	ø 41.0	32X1.5
TSUGAMI	BM-16	1616	2616	ø 30.0	75	ø 38.0	25X1.5
STAR	SC-20	1920	2920	ø 30.0	79	ø 38.0	26X1.5
KATAMAZ	850	8024	2024	ø 37.0	101	ø 46.5	32X1.5
WACHIGAL	WPL-17	1517	2517	ø 23.0	97	ø 32.0	22X1.5
Wang Tzyy	#20	1320	2320	ø 28.0	82	ø 38.0	24X20F"

Machines	Type	Item No	Item No	d	L	D	Thread M
SENDAY	SD-25	1525	2525	ø 34.0	84	ø 41.5	29X20f"
	SD-32	1532	2532	ø 42.0	95	ø 49.0	38X20f"
	SD-34	1534	2534	ø 42.0	95.5	ø 51.0	36X1.5
	SD-45	1545	2545	ø 56.0	120	ø 68.0	51X20f"
	SD-52	1552	2552	ø 61.0	120	ø 68.0	56X20f"
SCHAUBLIN	W-12 80/00002	1612		ø 12.0	46	ø 16	S 11.75X1.25
	W-12 80/93108	1611		ø 12.0	52	ø 16	S 11.75X1.25
	W-20 80/00004	1620		ø 20.0	73	ø 26.3	S 19.7X1.666
	W-25 80/00005	1625		ø 25.0	97.6	ø 33.7	S 24.7X15f"
	HW-25 80/02010	1626		ø 25.0	97.6	ø 33.7	S 24.7X15f"
	HB-32 72/02010	1632		ø 32.0	106	ø 40.0	S 29.7X15f"
	L-20 77/00122	1613		ø 20.0	122	ø 28.0	S 19.7X2.0
	B6 72/00128	1606		ø 6.0	31.3	ø 10.5	5X36f"
	B8 72/00137	1608		ø 8.0	35.5	ø 13.0	6.82x0.625
	B46 72/02007	1246		ø 46.0	120	ø 60.3	40X1.5L
NANN	359E (K23)	1923		ø 23.0	94	ø 32.0	Tr23X1.5
	386E (K32)	1932		ø 32.0	114	ø 45.0	Tr32X1.5
	389E (K45)	1945		ø 45.0	145	ø 60.0	Tr45x2.0
	9049E	1246		ø 46.0	120	ø 60.3	40X1.5L
	9070E	1940		ø 53.0	136	ø 69.3	47X1.5L
	3640E(2)	1626		ø 25.0	97.6	ø 33.7	S 24.7X15f"
	3714E	1632		ø 32.0	106	ø 40.0	S 29.7X15f"
	3718E	1718		ø 32.0	124	ø 45.0	Tr32X1.5
DAVENPORT	Burring	1920		ø 1.060"	4.375"	ø 1.190"	1.048"X16LH
	Serro B	1925		ø 1.218"	4.38"	ø 1.5"	1.143"X16RH
DMG	GM16-6	8816		ø 30.0	80.5	ø 39.0	Bayonet
	GM16-6 SUB	8817		ø 18.7	51.5	ø 25.0	Bayonet
	GMC20	8820		ø 34.0	90	ø 42.0	Bayonet
	GMC20 SUB	8821		ø 28.0	73	ø 32.0	Bayonet

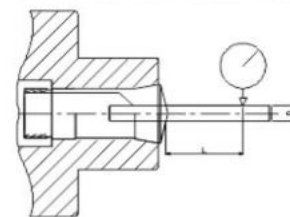
THIS IS SIMILAR TO DIN 6343



PUSH-TYPE COLLETS

clamping diameter		testing point	running concentricity	
D	L		standard	high
over	up to		m/m	precision
1	1.6	6	0.02	0.01
1.6	3	10	0.02	0.01
3	6	16	0.02	0.01
6	10	25	0.02	0.01
10	18	40	0.03	0.15
18	24	50	0.04	0.02
24	30	60	0.04	0.02
30	--	60	0.05	0.025

THIS IS SIMILAR TO DIN 6341



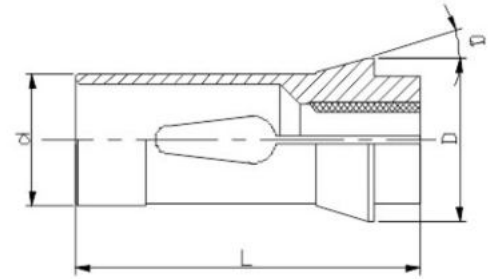
PULL-TYPE COLLETS

clamping diameter		testing point	running concentricity	
D	L		standard	high
over	up to		m/m	precision
0.5	1	3	0.02	0.01
1	1.6	6	0.02	0.01
1.6	3	10	0.02	0.01
3	6	16	0.02	0.01
6	10	25	0.02	0.01
10	18	40	0.03	0.15
18	24	50	0.04	0.02
24	30	60	0.04	0.02
30	--	60	0.05	0.025



Enitruice
ENTERPRISE CO., LTD.

HEADSTOCK COLLETS FOR LATHES



Machines	Type	Material		d	L	D	Article No				
		Steel Item No	Carbide Item No								
CITIZEN	R04	6204	3204	ø 8.0	36	ø 11.5					
	R07,D/F/G/L-10	6910	3910	ø 15.0	64	ø 21.0	F15/580	120E	TF15	40.003	
	B12, F12	6212	3212	ø 16.0	64	ø 21.0					
	D/E/F/L/M-16,E/F/L/M-20	6720	3720	ø 25.0	77	ø 35.0					
	L16/20,F16/20,G20,E20,A20	6216	3216	ø 26.0	67	ø 36.0					511.001
	F25, L25, E25, E25J	6225	3225	ø 30.0	78	ø 42.0					
	L32,M32,E32,G32	6232	3232	ø 37.0	92	ø 47.0					
STAR	JNC8	6508	3508	ø 12.0	51	ø 20.0					
	SW 7,SW10,JNC10,RNC10,SNC10	6910	3910	ø 15.0	64	ø 21.0	F15/580	120E	TF15	40.003	
	SE12, S13, VNC12, SJ15	6512	3512	ø 18.0	64	ø 25.0					
	SB16	6616	3616	ø 20.0	67	ø 26.0					
	RNC16, SE16, SR16, SH16	6516	3516	ø 20.0	67	ø 28.0	F20/87	138E	TF20	40.004	
	JNC16, VNC20	6520	3520	ø 24.0	65.5	ø 32.0					
	KNC16/20,SR20,VNC20	6720	3720	ø 25.0	77	ø 35.0					
	JNC16,ZNC16,VNC20,J20	6216	3216	ø 26.0	67	ø 36.0					
	KJR25,SCN25	6725	3725	ø 30.0	80	ø 42.0	F30/63	157E	TF30	40.006	
	JNC32/25, VNC32,MR32	6932	3932	ø 37.0	92	ø 47.0	F37/740	1536E	TF37	40.008	
STM38	1242	2242	ø 48.0	94	ø 60.0	F48/81	173E	TF48	231.009		
TSUGAMI	T7, BOO7, BM07,NP-4W	6707	3707	ø 10.0	46	ø 16.0	F10/1178	111E		140.001	
	L10	6710	3710	ø 14.0	47	ø 20.0					
	NT/NP11	6910	3910	ø 15.0	64	ø 21.0	F15/580	120E	TF15	40.003	
	BO12,NT/NP-12	6616	3616	ø 20.0	67	ø 26.0					
	NP17, NP16, NT17	6717	3717	ø 23.8	62	ø 28.0				S16-HMS	
	BO18A,S20,BO205A	6721	3721	ø 28.0	77	ø 35.0				S20-HM	
	BO18B,S20,BO205B	6720	3720	ø 25.0	77	ø 35.0					
	BS26A, BS25	6726	3726	ø 33.0	80	ø 40.0				S25-HM	
	BS26B, BS25	6725	3725	ø 30.0	80	ø 42.0	F30/63	157E	TF30	40.006	
	NT/NP-32	6232	3232	ø 37.0	92	ø 47.0					
	BH38	6738	3738	ø 43.0	92	ø 53.0	F43		TF43	511.024	
BH38(SUB)	6739	3739	ø 48.0	100	ø 54.0	F48		BS38	511.028		
NOMURA	NSP8410, NSP8420	6608	3608	ø 12.0	58	ø 18.0					
	NSP1053, NN10K	6610	3610	ø 16.0	50.5	ø 22.0					90.015
	NSP1653, NSP1253	6616	3616	ø 20.0	68	ø 26.0					
	NN20KF	6216	3216	ø 26.0	67	ø 36.0					511.001
	P-23	6623	3623	ø 29.0	72	ø 39.0					
	NNCP2553, NN25K	6625	3625	ø 32.0	84.5	ø 42.0					
	P-32	6632	3632	ø 42.0	86	ø 52.0					

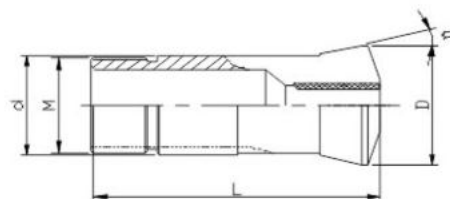
Machines	Type	Steel	Carbide	d	L	D	Article No			
		Item No	Item No							
TORNOS	M4,T4,TV	6904	3904	ø 8.0	42	ø 12.0	F8/577	101E	TF8	40.001
	M7	6907	3907	ø 10.0	47.5	ø 15.5	F10/86	109E	TF10	40.002
	MS7	6108	3108	ø 13.0	64	ø 19.0	F13/357	116E	TF13	40.016
	R10,M10	6910	3910	ø 15.0	64	ø 21.0	F15/580	120E	TF15	40.003
	R125	6912	3912	ø 16.0	64	ø 21.0	F16/1076	1212E	TF16	40.012
	R16,M15	6516	3516	ø 20.0	67	ø 28.0	F20/87	138E	TF20	40.004
	RR20,R20,M20	6920	3920	ø 25.0	77	ø 35.0	F25/64	145E	TF25	40.005
	M25	6725	3725	ø 30.0	80	ø 42.0	F30/63	157E	TF30	40.006
	MR32,TBM32	6932	3932	ø 37.0	92	ø 47.0	F37/740	1536E	TF37	40.008
TORNOS-DECO	MR32,TBM32	6907	3907	ø 10.0	47.5	ø 15.5	F10/86	109E	TF10	40.002
	DECO 10	6910	3910	ø 15.0	64	ø 21.0	F15/580	120E	TF15	40.003
	DECO 13	6912	3912	ø 16.0	64	ø 21.0	F16/1076	1212E	TF16	40.012
	DECO 13/16	6816	3816	ø 20.0	54	ø 26.0	F20/201	136E	F20-201	225.003
	DECO 20, DELTA 12/20	6920	3920	ø 25.0	77	ø 35.0	F25/64	145E	TF25	40.005
	DECO 26, SIGMA 20	6826	3826	ø 30.0	65	ø 38.0	F30/101	1446E	O161	90.009
	DECO 32	6932	3932	ø 37.0	92	ø 47.0	F37/740	1536E	TF37	40.008
	DELTA 38/5	6738	3738	ø 43.0	92	ø 53.0	F43		TF43	511.024
	DELTA 38/5 (SUB)	6739	3739	ø 48.0	100	ø 54.0	F48		BS38	511.028
BECHLER ENC	ENC 74/75	6108	3108	ø 13.0	64	ø 19.0	F13/357	116E	TF13	40.016
	ENC 162/164	6816	3816	ø 20.0	54	ø 26.0	F20/201	136E	F20-201	225.003
	ENC 163/167	6920	3920	ø 25.0	77	ø 35.0	F25/64	145E	TF25	40.005
BECHLER	A4, A7	6107	3107	ø 10.0	46	ø 16.0				
	A7, A10, AR10	6110	3110	ø 14.0	46	ø 18.0	F14/98	117E		140.002
	B12	6112	3112	ø 18.0	67	ø 25.0	F18/85	127E		140.003
	B16	6116	3116	ø 22.0	67	ø 28.0	F22/88	139E		140.004
	B20,BR20	6120	3120	ø 26.0	67	ø 32.0	F26/90	146E		140.005
STROHM	M75-M105	6907	3907	ø 10.0	47.5	ø 15.5	F10/86	109E	TF10	40.002
	M105/125	6910	3910	ø 15.0	64	ø 21.0	F15/580	120E	TF15	40.003
	M205/255	6920	3920	ø 25.0	77	ø 35.0	F25/64	145E	TF25	40.005
	M205/255	6725	3725	ø 30.0	80	ø 42.0	F30/63	157E	TF30	40.006
TRAUB	TNL 7	6907	3907	ø 10.0	47.5	ø 15.5	F10/86	109E	TF10	40.002
	TNL 12/7	6910	3910	ø 15.0	64	ø 21.0	F15/580	120E	TF15	40.003
	TNL 12/7	6912	3912	ø 16.0	64	ø 21.0	F16/1076	1212E	TF16	40.012
	TNL 16	6816	3816	ø 20.0	54	ø 26.0	F20/201	136E	F20-201	225.003
	TNL 16	6516	3516	ø 20.0	67	ø 28.0	F20/87	138E	TF20	40.004
	TNL 20	6920	3920	ø 25.0	77	ø 35.0	F25/64	145E	TF25	40.005
WANG TZYU	SL-1693	6616	3616	ø 20.0	68	ø 26.0				
	SL-2596	6225	3225	ø 30.0	78	ø 42.0				
	SL-3295	6232	3232	ø 37.0	92	ø 47.0				
POLYGYM	DIAMOND 12,12CS	6212	3212	ø 16.0	64	ø 21.0				
	DIAMOND 16,16CS	6616	3616	ø 20.0	68	ø 26.0				
	DIAMOND 16,16CS	6216	3216	ø 26.0	67	ø 36.0				511.001
	DIAMOND 25,25B,25CS,25CSB	6225	3225	ø 30.0	78	ø 42.0				
	DIAMOND 32,32B,32CS,32CSB	6232	3232	ø 37.0	92	ø 47.0				
	DIAMOND 32,32B,32CS,32CSB	1242	2242	ø 48.0	94	ø 60.0	F48/81	173E	TF48	231.009

Machines	Type	Steel	Carbide	d	L	D	Article No			
		Item No	Item No							
JINN FA	JSL-20	6721	3721	ø 28.0	77	ø 35.0				
	JSL-26	6726	3726	ø 33.0	80	ø 40.0				
	JSL-32	6232	3232	ø 37.0	92	ø 47.0				
	JSL-42AB	1342	2342	ø 54.0	87	ø 68.0				
HANWHA	HANEX11, SL12	6912	3912	ø 16.0	64	ø 22.0	F16/1076	1212E	TF16	40.012
	HANEX17, ML18-G, SL16	1215	2215	ø 22.0	55	ø 30.0	F22/71	140E		231.002
	HANEX20	6920	3920	ø 25.0	77	ø 35.0	F25/64	145E	TF25	40.005
	HANEX25	6425	3425	ø 32.0	79	ø 45.0				
	SL-32	6932	3932	ø 37.0	92	ø 47.0	F37/740	1536E	TF37	40.008
	SL-35	6435	3435	ø 40.0	92	ø 49.0				
	SL-35HP-II,SUB	6436	3436	ø 40.0	92	ø 50.0				
	SL-38HP-II	6438	3438	ø 44.0	92	ø 52.0	F44			511.026
NEXTURN	SA-12	6912	3912	ø 16.0	64	ø 22.0	F16/1076	1212E	TF16	40.012
	SA-18,SA-20,SA-20e	6920	3920	ø 25.0	77	ø 35.0	F25/64	145E	TF25	40.005
	SA-26,SA-26e	1225	2225	ø 32.0	75	ø 45.0	F32/221	161E		231.005
	SA-32	6932	3932	ø 37.0	92	ø 47.0	F37/740	1536E	TF37	40.008
GAUTHIER	GM 12	6816	3816	ø 20.0	54	ø 26.0	F20/201	136E	F20-201	225.003
	GM 20	6920	3920	ø 25.0	77	ø 35.0	F25/64	145E	TF25	40.005
	GM 25	6725	3725	ø 30.0	80	ø 42.0	F30/63	157E	TF30	40.006
GILDEMEISTER	GLD 12	6516	3516	ø 20.0	67	ø 28.0	F20/87	138E	TF20	40.004
	GLD 16/20,GS20-L	6920	3920	ø 25.0	77	ø 35.0	F25/64	145E	TF25	40.005
	GLD 25L,GS25-L	1225	2225	ø 32.0	75	ø 45.0	F32/221	161E		231.005
	SPEED 32-10	6932	3932	ø 37.0	92	ø 47.0	F37/740	1536E	TF37	40.008
	SPRINT 42	1242	2242	ø 48.0	94	ø 60.0	F48/81	173E	TF48	231.009
PETERMANN	P4,P7	6004	3004	ø 8.0	41	ø 12.0	F8/1079			90.002
	P7	6907	3907	ø 10.0	47.5	ø 15.5	F10/86	109E	TF10	40.002
	P7R	6010	3010	ø 15.0	47	ø 22.0	F15/358	121E		90.004
	P10,10HSR	6011	3011	ø 16.0	55	ø 22.0	F16/104	123E		90.005
	P16	6016	3016	ø 22.0	66	ø 32.0	F22/727			90.007
MANURHIN	Swing 13,Traminer 13	6112	3112	ø 18.0	67	ø 25.0	F18/85	127E		140.003
	Twin 13,Decotum 16	6516	3516	ø 20.0	67	ø 28.0	F20/87	138E	TF20	40.004
	Traminer 16	6816	3816	ø 20.0	54	ø 26.0	F20/201	136E	F20-201	225.003
	KMX,Swing,Traminer,Twin 20	6920	3920	ø 25.0	77	ø 35.0	F25/64	145E	TF25	40.005
	KMX 26,Twin 20,Swing 20	1225	2225	ø 32.0	75	ø 45.0	F32/221	161E		231.005
	Mirabel PM 32	1232	2232	ø 38.1	108	ø 49.0	F38/72	164E		285.002
MAIER	ML7	6907	3907	ø 10.0	47.5	ø 15.5	F10/86	109E	TF10	40.002
	ML12G,ML12S,ML125K II	6910	3910	ø 15.0	64	ø 21.0	F15/580	120E	TF15	40.003
	ML18S,ML18H,ML20D	6920	3920	ø 25.0	77	ø 35.0	F25/64	145E	TF25	40.005
	ML26S,ML26H	6725	3725	ø 30.0	80	ø 42.0	F30/63	157E		40.006
	ML26D	1225	2225	ø 32.0	75	ø 45.0	F32/221	161E		231.005
	ML36	1236	2236	ø 42.0	94	ø 55.0	F42/99	171E		231.007
HARDINGE	S20,ST220	6920	3920	ø 25.0	77	ø 35.0	F25/64	145E	TF25	40.005
	ST225	6725	3725	ø 30.0	80	ø 42.0	F30/63	157E	TF30	40.006
DMG	GMC 20	6320	3320	ø 25.0	77	ø 35.0				



Emituice
ENTERPRISE CO., LTD.

GUIDE BUSHES FOR LATHES



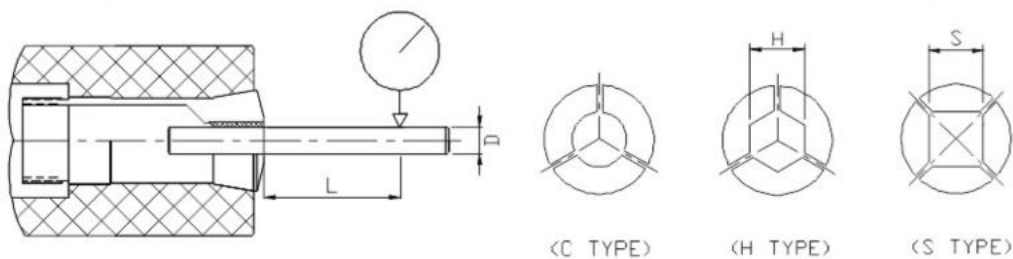
Machines	Type	Item No	d	L	D	Thread M	Article No		
CITIZEN	R04	5204	ø 9.0	38.5	ø 12.5	M8X0.75		263.001	
	R07	5907	ø 11.0	52	ø 14.5	M10X0.75	3134E	3.001	TD-7
	D10,E10,F10,L10	5910	ø 16.0	59	ø 20.5	M14X1.0	3260E	8.001	TD10
	B12, F12,C12,A12	5212	ø 18.0	60	ø 22.0	M18X1.0	3319E	174.001	SD125R
	B20, M20, L20	5920	ø 28.0	82	ø 34.0	M25X1.0	3602E	22.001	TD25S
	L16/20,F20,E20,WF6,206M,A20	5216	ø 30.0	59	ø 35.0	M30X1.0		510.001	
	F25, L25, E25, E25J	5725	ø 34.0	87.5	ø 41.0	M34X1.0	3733E	451.001	CD25
	L32,M32,G32,E32	5232	ø 42.0	82	ø 48.0	M40X1.0		28.01	TD32
STAR	TD-7	5907	ø 11.0	52	ø 14.5	M10X0.75	3134E	3.001	TD-7
	JNC-10,RNC-10,SNC-10	5910	ø 16.0	59	ø 20.5	M14X1.0	3260E	8.001	TD10
	SE12, VNC12, SJ15,SNC15	5512	ø 21.0	58	ø 24.0	M18X1.0	3438E	450.001	SNC15
	SB16, SR16	5616	ø 22.0	70.5	ø 26.0	M20X1.0		487.001	P1653D
	RNC16,SE16,SA16,VNC16,KNC16	5516	ø 22.0	68	ø 29.0	M22X1.0			
	SA-16, SR-16	5916	ø 22.0	68	ø 29.0	M22X1.0	3455E	39.001	TD20R
	SR20,KNC16, VNC20	5920	ø 28.0	82	ø 34.0	M25X1.0	3602E	22.001	TD25S
	JNC16,J20,ZNC16,VNC20	5216	ø 30.0	59	ø 35.0	M30X1.0		510.001	
	SCN-25,KJR-25	5725	ø 34.0	87.5	ø 41.0	M34X1.0	3733E	451.001	CD25
	JNC32/25,VNC32/25,MR32,SR32	5532	ø 42.0	82	ø 49.0	M40X1.0	3827E	28.001	TD32S
	STM-38	5538	ø 48.0	82	ø 59.0	M46X1.0		464.001	
TSUGAMI	NP-4W	5907	ø 11.0	52	ø 14.5	M10X0.75	3134E	3.001	TD-7
	T7, BOO7, BM07	5707	ø 12.0	52	ø 15.8	M12X1.0	3149E	261.001	
	L10	5710	ø 15.0	54	ø 19.0	M14X1.0			
	NT-11,NP-11	5212	ø 18.0	60	ø 22.0	M18X1.0	3319E	174.001	SD125R
	BO12	5616	ø 22.0	70.5	ø 26.0	M20X1.0		487.001	P1653D
	NP-17, NP-16, NT-17	5717	ø 23.0	72	ø 28.0	M22X1.0		483.001	TSG20R
	NP-20,BS20,BO18,BO205	5720	ø 30.0	70	ø 36.0	M28X1.0		486.001	NN20KD
	BO20-CV	5721	ø 26.0	77	ø 29.0	M25X1.0			TD26
	BA-26	5726	ø 33.0	70	ø 38.0	M30X1.0			
	BA-26L	5724	ø 32.0	70	ø 38.0	M30X1.0			
	S-25,BS-26	5725	ø 34.0	87.5	ø 41.0	M34X1.0	3733E	451.001	CD25
	NP-32	5532	ø 42.0	82	ø 49.0	M40X1.0	3827E	28.001	TD32S
	BH38	5738	ø 48.0	81	ø 54.0	M46X1.0			
NOMURA	NS-P8410, NS-P8420	5608	ø 14.0	60.5	ø 20.0	M14X1.0		480.001	P853D
	NS-P1053,NN-10K,	5610	ø 16.0	63	ø 20.0	M14X1.0		481.001	P1053D
	NS-P1653,NS-P1253	5616	ø 22.0	70.5	ø 26.0	M20X1.0		487.001	P1653D
	NN-P20,NN-20KF	5620	ø 30.0	67.5	ø 35.0	M30X1.0			
	NNC-P2553, NN-25K	5625	ø 36.0	89	ø 44.0	M36X1.0			
	P-32	5632	ø 44.0	90	ø 50.0	M40X1.0			

Machines	Type	Item No	d	L	D	Thread M	Article No		
TORNOS	M 4,T4,TV	5904	ø 9.0	44	ø 12.0	M 8X0.75	3077E	1.001	PD-4
	M 7	5907	ø 11.0	52	ø 14.5	M 10X0.75	3134E	3.001	TD-7
	M 7,MS7	5908	ø 13.0	68	ø 17.0	M 13X1.0		45.001	
	R10, M 10,R125,MS7	5910	ø 16.0	59	ø 20.5	M 14X1.0	3260E	8.001	TD10
	R10, M 10,R125	5212	ø 18.0	60	ø 22.0	M 18X1.0	3319E	174.001	SD125R
	M 15,R16,RR20	5915	ø 22.0	68	ø 29.0	M 19X1.0	3454E	13.001	TD20
	M 15,R16,RR20	5916	ø 22.0	68	ø 29.0	M 22X1.0	3455E	39.001	TD20R
	RR20,	5920	ø 28.0	82	ø 34.0	M 25X1.0	3602E	22.001	TD25S
	M 20,M25	5925	ø 32.0	70.5	ø 40.0	M 32X1.0	3708E	282.001	TSD20
	MR32	5932	ø 44.0	87.5	ø 53.0	M 40X1.0	3835E	27.001	
TORNOS-DECO	DECO 2000-7	5907	ø 11.0	52	ø 14.5	M 10X0.75	3134E	3.001	TD-7
	DECO 2000-10	5910	ø 16.0	59	ø 20.5	M 14X1.0	3260E	8.001	TD10
	DECO 2000-13/16	5816	ø 24.0	61	ø 29.5	M 24X1.0	3507E	61.002	O201
	DELTA 12/20	5721	ø 26.0	77	ø 29.0	M 25X1.0		99.001	TD26
	DECO 2000-20	5820	ø 28.0	82	ø 38.0	M 25X1.0	3610E	18.001	TD25/167
	DECO 2000-26	5725	ø 34.0	87.5	ø 41.0	M 34X1.0	3733E	451.001	CD25
	DECO 2000-32	5532	ø 42.0	82	ø 49.0	M 40X1.0	3827E	28.001	TD32S
	DELTA 38/5	5738	ø 48.0	81	ø 54.0	M 46X1.0		496.001	
BECHLER	A4, A7	5904	ø 9.0	44	ø 12.0	M 8X0.75	3077E	1.001	PD-4
	A7, A10	5107	ø 12.0	52	ø 15.0	M 12X1.0	3149E	261.001	
	A7, A10, AR10	5915	ø 22.0	68	ø 29.0	M 19X1.0	3454E	13.001	TD20
	B12, B16, B20	5820	ø 28.0	82	ø 38.0	M 25X1.0	3610E	18.001	TD25/167
BECHLER ENC	74/75	5910	ø 16.0	59	ø 20.5	M 14X1.0	3260E	8.001	TD10
	162/164	5816	ø 24.0	61	ø 29.5	M 24X1.0	3507E	61.002	O201
	163/167	5820	ø 28.0	82	ø 38.0	M 25X1.0	3610E	18.001	TD25/167
STROHM	M 75/105	5907	ø 11.0	52	ø 14.5	M 10X0.75	3134E	3.001	TD-7
	M 105/125	5312	ø 18.0	60	ø 22.0	M 16X1.0	3320E	166.001	SD125R16
	M 205/255	5915	ø 22.0	68	ø 29.0	M 19X1.0	3454E	13.001	TD20
TRAUB	TNL 12/7	5312	ø 18.0	60	ø 22.0	M 16X1.0	3320E	166.001	SD125R16
	TNL 16	5916	ø 22.0	68	ø 29.0	M 22X1.0	3455E	39.001	TD20R
	TNL 17	5920	ø 28.0	82	ø 34.0	M 25X1.0	3602E	22.001	TD25S
	TNL 20	5820	ø 28.0	82	ø 38.0	M 25X1.0	3610E	18.001	TD25/167
	TNL 26	5725	ø 34.0	87.5	ø 41.0	M 34X1.0	3733E	451.001	CD25
WANG TZY	SL-1693	5616	ø 22.0	70.5	ø 26.0	M 20X1.0		487.001	P1653D
	SL-2596	5725	ø 34.0	87.5	ø 41.0	M 34X1.0	3733E	451.001	CD25
	SL-3295	5232	ø 42.0	82	ø 48.0	M 40X1.0		28.01	TD32
POLYGYM	DIAMOND 12,12CS	5212	ø 18.0	60	ø 22.0	M 18X1.0	3319E	174.001	SD125R
	DIAMOND 16,16CS	5616	ø 22.0	70.5	ø 26.0	M 20X1.0		487.001	P1653D
	DIAMOND 20,20B,20CS,20CSB	5216	ø 30.0	59	ø 35.0	M 30X1.0		510.001	
	DIAMOND 25,25B,25CS,25CSB	5725	ø 34.0	87.5	ø 41.0	M 34X1.0	3733E	451.001	CD25
	DIAMOND 32,32B,32CS,32CSB	5232	ø 42.0	82	ø 48.0	M 40X1.0		28.01	TD32
	DIAMOND SY-42	5542	ø 50.0	82	ø 56.5	M 49X1.0			
JINN FA	JSL-20	5720	ø 30.0	70	ø 36.0	M 28X1.0		486.001	NN20KD
	JSL-26	5725	ø 34.0	87.5	ø 41.0	M 34X1.0	3733E	451.001	CD25
	JSL-32	5532	ø 42.0	82	ø 49.0	M 40X1.0	3827E	28.001	TD32S
	JSL-42AB	5742	ø 52.0	95	ø 59.0	M 50X1.0			
HANWHA	HANEX11, SL12	5212	ø 18.0	60	ø 22.0	M 18X1.0	3319E	174.001	SD125R
	HANEX17, ML18-G	5916	ø 22.0	68	ø 29.0	M 22X1.0	3455E	39.001	TD20R
	HANEX20	5920	ø 28.0	82	ø 34.0	M 25X1.0	3602E	22.001	TD25S
	HANEX25	5725	ø 34.0	87.5	ø 41.0	M 34X1.0	3733E	451.001	CD25
	SL-32	5532	ø 42.0	82	ø 49.0	M 40X1.0	3827E	28.001	TD32S
	SL-35,SL-38	5435	ø 45.0	82	ø 52.0	M 42X1.0			
	SL-38HP-II	5438	ø 46.0	82	ø 53.0	M 45X1.0			

Machines	Type	Item No	d	L	D	Thread M	Article No		
NEXTURN	SA-12	5312	ø 18.0	60	ø 22.0	M 16X1.0	3320E	166.001	SD125R16
	SA-12	5212	ø 18.0	60	ø 22.0	M 18X1.0	3319E	174.001	SD125R
	SA-18,SA-20,SA-20e	5920	ø 28.0	82	ø 34.0	M 25X1.0	3602E	22.001	TD25S
	SA-26,SA-26e	5725	ø 34.0	87.5	ø 41.0	M 34X1.0	3733E	451.001	CD25
	SA-32	5532	ø 42.0	82	ø 49.0	M 40X1.0	3827E	28.001	TD32S
GAUTHIER	1hR	5907	ø 11.0	52	ø 14.5	M 10X0.75	3134E	3.001	TD-7
	GM 12	5910	ø 16.0	59	ø 20.5	M 14X1.0	3260E	8.001	TD10
	GM 20	5915	ø 22.0	68	ø 29.0	M 19X1.0	3454E	13.001	TD20
GILDEMEISTER	GLD 12	5312	ø 18.0	60	ø 22.0	M 16X1.0	3320E	166.001	SD125R16
	GLD 16/20,GS20-L	5820	ø 28.0	82	ø 38.0	M 25X1.0	3610E	18.001	TD25/167
	GLD 25L,GS25-L	5725	ø 34.0	87.5	ø 41.0	M 34X1.0	3733E	451.001	CD25
	SPEED 32-10	5532	ø 42.0	82	ø 49.0	M 40X1.0	3827E	28.001	TD32S
	SPRINT 42	5142	ø 48.0	81	ø 56.0	M 48X1.25		115.001	
PETERMANN	P4,P7	5904	ø 9.0	44	ø 12.0	M 8X0.75	3077E	1.001	PD-4
	P7R,10,10HS	5910	ø 16.0	59	ø 20.5	M 14X1.0	3260E	8.001	TD10
	P16	5816	ø 24.0	61	ø 29.5	M 24X1.0	3507E	61.002	O201
MANURHIN	Swing 13,Traminer 13	5312	ø 18.0	60	ø 22.0	M 16X1.0	3320E	166.001	SD125R16
	Twin 13,Decotum 16	5916	ø 22.0	68	ø 29.0	M 22X1.0	3455E	39.001	TD20R
	Traminer 16	5915	ø 22.0	68	ø 29.0	M 19X1.0	3454E	13.001	TD20
	K M X,Swing,Traminer,Twin 20	5820	ø 28.0	82	ø 38.0	M 25X1.0	3610E	18.001	TD25/167
	K M X 26	5725	ø 34.0	87.5	ø 41.0	M 34X1.0	3733E	451.001	CD25
	M irabel PM 32	5532	ø 42.0	82	ø 49.0	M 40X1.0	3827E	28.001	TD32S
MAIER	M L7	5907	ø 11.0	52	ø 14.5	M 10X0.75	3134E	3.001	TD-7
	M L12G,M L12S,M L125K II	5312	ø 18.0	60	ø 22.0	M 16X1.0	3320E	166.001	SD125R16
	M L18S,M L18H,M L20D	5916	ø 22.0	68	ø 29.0	M 22X1.0	3455E	39.001	TD20R
	M L20	5920	ø 28.0	82	ø 34.0	M 25X1.0	3602E	22.001	TD25S
	M L26S,M L26H,M L26D	5725	ø 34.0	87.5	ø 41.0	M 34X1.0	3733E	451.001	CD25
	M L32	5532	ø 42.0	82	ø 49.0	M 40X1.0	3827E	28.001	TD32S
HARDINGE	S20,ST220	5720	ø 30.0	70	ø 36.0	M 28X1.0		486.001	NN20KD
	ST220	5920	ø 28.0	82	ø 34.0	M 25X1.0	3602E	22.001	TD25S
	ST25,ST225	5725	ø 34.0	87.5	ø 41.0	M 34X1.0	3733E	451.001	CD25
DMG	GMC 20	5820	ø 28.0	82	ø 38.0	M 25X1.0	3610E	18.001	TD25/167

RUNNING CONCENTRICITY

This is similar to JIS Carbide Guide Bush and Collet Chuck



CIRCULAR TYPE

HEXAGON OR SQUARE TYPE

circular diameter		testing point	running concentricity		H or S		testing point	running concentricity	
D	over	L	standard	high	D	over	L	standard	high
	up to		m/m	precision		up to		m/m	precision
0.7	1	3	0.01	0.006	1	3	10	--	0.03
1	1.6	6	0.01	0.005	3	6	16	0.07	0.03
1.6	3	10	0.01	0.005	6	10	25	0.1	0.03
3	6	16	0.01	0.005	10	18	40	0.1	0.03
6	10	25	0.01	0.005	18	24	50	--	0.03
10	18	40	0.015	0.008	24	35	60	--	0.03
18	24	50	0.015	0.008					
24	30	60	--	0.008					
30	--	60	--	--					



Enituice
ENTERPRISE CO., LTD.



Enituice Enterprise Co., Ltd. is a professional manufacturer of Spring Collets, Headstock Collets and Guide Bushes. With our extensive manufacturing experience, technological expertise, superior research and development (R & D) skills, our collets and guide bushes can meet any and all industrial standards requirements. The high quality of our materials, specialized heat treatment process, high precision grinding machining and strict quality control have made our products highly sought after all over the world. The main principles of our company are "Honesty", "Professional" and "Quality". By following the main principals, we can supply precision products at competitive prices for your company. We welcome your inquiries and hope to be of service in the future.

Taiwan Factory

Tel: +7 (495) 988-22-19
Fax +7 (495) 988-22-18
E-mail: info@m-ser.ru

Москва, Санкт-Петербург, Екатеринбург

www.m-ser.ru